



# primelase HR

SUPER FAST LASER HAIR REMOVAL

3 X MORE POWERFUL  
5 X FASTER  
3 X MORE PROFITABLE



 **cocoonUK**  
MEDICAL

[www.cocoonmedical.co.uk](http://www.cocoonmedical.co.uk)

## MULTIPLE WAVELENGTHS

The Primelase HR platform is designed to work with three different wavelengths (755nm, 810nm and 1060nm) and also with an applicator which has combined wavelengths (810nm, 940nm + 1060nm) to remove permanently and safely all kinds of hair in all skin phototypes, with the maximum safety and effectiveness.

## USP (ULTRA SHORT PULSE) TECHNOLOGY

Primelase HR works using exclusive USP (Ultra Short Pulse) technology, which enables the delivery of ultra short pulses (up to 3 ms) with high fluence in large spots thanks to its high peak power being the first diode laser with characteristics of SSL (Solid State Laser).

## MAXIMUM SPEED

The frequency in the repetition of the pulse up to 3Hz when static and 10Hz when dynamic, along with the different spot sizes we provide (10x9, 20x9, 30x9 and 30x17) make Primelase HR one of the fastest, safest, most powerful and efficient devices on the market, including fine, residual hair in the last sessions of a treatment course.



The perfect combination for all skin phototypes throughout the year.



primelase HR

# Research, knowledge and development based on results

## USP (Ultra Short Pulse) technology

The USP technology is designed to combine the advantages of solidstate LASER with diode LASER, enabling work to be done with a high peak power (Up to 4,800W) delivering the energy in ultra short pulses (up to 3ms).

## New diode LASER generation

The primelase HR platform was developed based on the latest advances in laser technology with the aim of providing greater versatility and precision in treatments.

The combination of its four wavelengths means that all kinds of patients can be treated without limitation of phototype, hair type or time of year with the maximum effectiveness and safety.

## Multiple Wavelengths

- **755nm:** recommended for treating pale skins (phototypes I-III) with fine hair. Indicated for removing the residual hair of the last sessions. Its high peak power makes it the most powerful LASER on the market with this wavelength. Up to 3600W.
- **810nm:** recommended for treating all skin phototypes, particularly patients with a great density of hair and first sessions. Its high peak power (Up to 4800W) and the USP technology create a unique combination on the market achieving excellent results with large spots (30x17mm). Up to 4800W.
- **Combined wavelengths:** perfect balance to treat dark phototypes (III-IV a VI), we have the absorption efficiency of the 810nm wavelength and the safety of the 1060nm wavelength. Excellent to treat all hair depths and dark skins.
- **1060nm:** indicated for treating dark phototypes (III-IV tanned, V and VI). Its work mode, exclusively designed for this wavelength, offers a unique combination providing maximum safety with the best results. Up to 4000W.

## How does primelase HR work?

Primelase HR is characterised by being the only laser diode platform that makes a combination between SSL (Solid State Laser) and diode LASER, achieving a mix of advantages:

- Maintenance free
- No consumables
- All skin types
- Ultra Short Pulse duration
- Compatible with domestic electrical network
- Two work modes (Static & Dynamic)

## Static mode:

By working at 1, 2 and 3 Hz with high fluence and ultra short pulses, the speed of the treatment is not reduced and any risk of skin lesions is avoided. This work mode is indicated for fine hair and residual hair at final sessions and for pale phototypes.

## Dynamic mode:

It works at a speed of 10Hz even at high fluence. Indicated for initial sessions with very dense hair.

Wave length	Work mode	Fluence-short pulse duration		
		Spot 10x9	Spot 20x9	Spot 30x17
755 nm	1Hz, 2Hz, 3Hz 10Hz	41J/cm <sup>2</sup> 13J/cm <sup>2</sup>	42J/cm <sup>2</sup> 13J/cm <sup>2</sup>	
	Static Typical power	30J/cm <sup>2</sup> -20ms	25J/cm <sup>2</sup> -20ms	
	Dinamic Typical power	10J/cm <sup>2</sup> -6ms	8J/cm <sup>2</sup> -5ms	
810 nm	1Hz, 2Hz, 3Hz 10Hz	60J/cm <sup>2</sup> 18J/cm <sup>2</sup>	43J/cm <sup>2</sup> 12J/cm <sup>2</sup>	21J/cm <sup>2</sup> 6J/cm <sup>2</sup>
	Static Typical power	40J/cm <sup>2</sup> -20ms	25J/cm <sup>2</sup> -25ms	17J/cm <sup>2</sup> -24ms
	Dinamic Typical power	10J/cm <sup>2</sup> -4ms	8J/cm <sup>2</sup> -4ms	6J/cm <sup>2</sup> -7ms
1060 nm	1Hz, 2Hz, 3Hz 10Hz	80J/cm <sup>2</sup> 29J/cm <sup>2</sup>		
	Static Typical power	50J-20ms		
	Dinamic Typical power	15J/cm <sup>2</sup> -4ms		

# Exclusive technology and constant innovation

## Spot variety: maximum precision and maximum power

Thanks to the USP technology, primelase HR can work with different spot sizes obtaining the best results and adapting to all types of areas and patient characteristics.

## Perfect pulse delivery

The primelase HR platform works with a square pulse system which allows a perfect pulse to be delivered. We guarantee the delivery of the energy in each millisecond of the pulse duration, obtaining a regular warming of the hair, avoiding any possibility of secondary risks and helping to achieve the best results.

## Crystal Freeze

This system carries out an ongoing measuring process of the input and output of the coolant flow of the liquid of the cooling of the laser head.

Therefore, "crystal freeze" guarantees a constant temperature of 5 °C at the tip of the handpiece, independently of the hours it has been used and the temperature of the room, allowing it to work with high power and big spot sizes guaranteeing the safety of the treatment.

755 nm	810 nm	810 nm	1060 nm 940 nm	810 nm	1060 nm
20x9	30x9	30x17	20x9		10x9
3600W	4800W	4800W	4000W		4000W
10x9	10x9	20x9			
1800W	2400W	4800W			

# Before & After

## PATIENT DATA 1:

Phototype II • Applicator: Spot 20x9 • 755nm • 16J/ 3Hz/ 20ms • Mode: Static



AREA OF TREATMENT



IMMEDIATELY AFTER TREATMENT



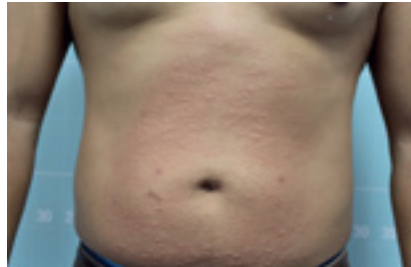
CLOSE UP VIEW

## PATIENT DATA 2:

Phototype IV • Applicator: Spot 30x9 • 810nm • 8J/ 10Hz/ 3ms • Mode: Dynamic



AREA OF TREATMENT



IMMEDIATELY AFTER TREATMENT



CLOSE UP VIEW

## PATIENT DATA 3:

Phototype VI • Applicator: Spot 10x9 • 1060nm • 12J/ 7Hz/ 4ms • Mode: Dynamic



AREA OF TREATMENT



IMMEDIATELY AFTER TREATMENT



CLOSE UP VIEW

# The latest advancement in aesthetic laser technology.

---

Versatile platform with ultra-high power (4800W) which combines 4 wavelengths (755, 810, 940 and 1060nm) and 4 spots (10x9, 20x9, 30x9 and 30x17mm<sup>2</sup>), in order to treat all kind of phototypes, hair type, body area or season of the year, with the maximum safety, profitability and efficacy in all treatments.

## Technical Specifications

---

### BASIC FUNCTIONING

**Type of equipment:** Diode LASER hair removal device

**LASER emission:** Direct by quartz prism

### TECHNICAL CHARACTERISTICS

**Maximum peak power:** 10000W

**Wavelength:** 755nm-1060nm

**Maximum energy:** 300J

**Pulse duration:** 3ms-400ms

### POWER

**Power supply:** Single phase, 100-240V

**Network frequency:** 50-60Hz

**Nominal power:** 2800W

**Maximum power:** 3300W

**Maximum intensity:** (200-240V) 13A

### REGULATION

**MDD directive Class:** IIb

**Class. according to IEC:** 60825-1 Class IV LASER

**Class. according to IEC:** 60601-1 Class I, type BF

**CE Marking:** CE0120

### PHYSICAL CHARACTERISTICS

**Dimensions:** 1140 x 480 x 550mm

**Weight:** 75Kg

**Screen:** Touchscreen 10, 4"

**Work range:** 18-30 °C

**Storage:** 2-50 °C | < 90% humidity (without condensation)



AESTHETIC TECHNOLOGY BY



Cocoon Medical UK

t: +44 (0) 1554 700 040 | e: [info@cosmeditech.com](mailto:info@cosmeditech.com)

[www.cocoonmedical.co.uk](http://www.cocoonmedical.co.uk)

[www.cosmeditech.com](http://www.cosmeditech.com)

